



# Mini8 Plus

*Portable Molecular  
Diagnostic Solution  
qPCR  
Anytime / Anywhere*

**For Research Use Only**

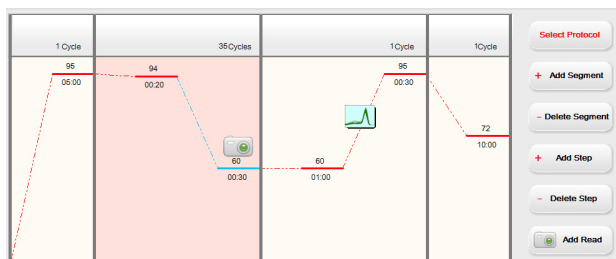
## Features

- Power: 12V DC universal power supply or battery pack
- User friendly: Simple interface
- Small footprint and light weight: 205 x190x98 mm (LxWxH) and only 2.1 kg
- High sensitivity: As low as 1 copy
- Sample capacity: 8\*0.2 ml PCR tubes
- Two channels: SYBR/FAM, ROX/Texas Red
- Open system: Compatible with most commercial reagents
- After each run, system automatically emails data to an email address chosen by user

## Customer Feedback

- Minimal footprint and sturdy design
- This device makes PCR mobile and convenient
- Emailing the data automatically after each run to a preselected email address is a useful benefit
- No calibration is required, easy to move across the lab or across the country - Ideal for field testing applications

## User Friendly



Set Up

Sample Well	1	2	3	4	5	6	7	8
Sample Name	<None>	<None>	<None>	<None>	<None>	<None>	<None>	<None>
Sample Type	Unk	Unk	Unk	Unk	Unk	Unk	Unk	Unk
Fluorophore CH1	None	None	None	None	None	None	None	None
Fluorophore CH2	None	None	None	None	None	None	None	None
Concentration CH1	?	?	?	?	?	?	?	?
Concentration CH2	?	?	?	?	?	?	?	?

Plate Layout

Please input terminal  $\Delta Rn$  for each sample.

E-mail Sender:

E-mail Recipient 1:

Send Report

## Specifications

Optical	Light Source	High power LED
	Detector	Photodiode

Thermology Parameters	Heating/cooling model	Peltier
	Ramping Rate(Max.)	3°C /s
	Thermal Uniformity	±0.2°C
	Thermal Accuracy	±0.2°C
	Temperature Range	4-100°C

Operational	Sample Format	8 Wells
	Reaction Volume	15-150 $\mu$ L
	Sensitivity of Detection	1 Copy
	Melting Curve	Supported Resolution to 0.5°C
	Multiplexing	ROX version: Detect Up to 2 Dyes Simultaneously, 470/520 nm (SYBR/FAM); 565/625 nm (ROX/Texas Red)  VIC version: 470/520 nm (SYBR/FAM); 520/570 nm (HEX/VIC)

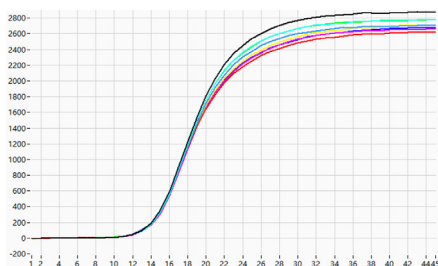
Physical	Dimensions	205×190×98 mm (L×W×H)
	Net Weight	2.1 kg

Computer Configuration	PC Requirement	WIN7 / WIN8.1 / WIN10
------------------------	----------------	-----------------------

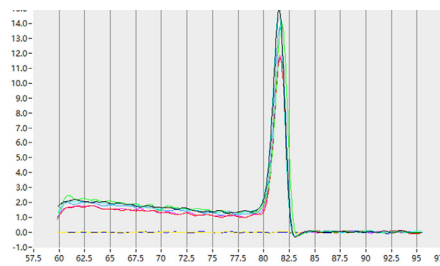
Environmental Requirement	Ambient Temperature	Operating Temp: 15-30°C Storage Temp: 10-60°C
	Ambient Humidity	Operating Humidity: 15-90% Relative Humidity Storage: 5-95%

Power Supply	12V DC, 10A
--------------	-------------

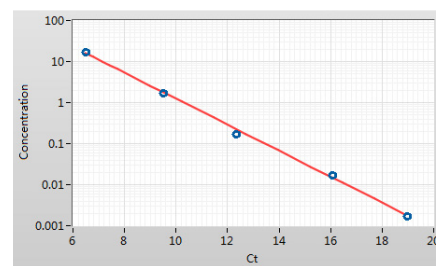
## Result



PCR Amplification Curve



Melting Curve



Quantitative

### Coyote Bioscience Co., Ltd.

2th Floor , Shangdixinilu#12 Haidian District, Beijing , China  
 Phone: +8610 64844237  
[www.coyotebio.com/en](http://www.coyotebio.com/en)

### Coyote Bioscience USA Inc.

1506 Dell Avenue, Suite A, Campbell, CA 95008  
 Phone: +1 650-528-2199  
[www.coyotebio-usa.com](http://www.coyotebio-usa.com)